

Welcome to UNIKOM  
Metal. We specialise in  
manufacturing various  
types of Steel Poles.



**UNIKOM STEEL**  
FABRICATION & GALVANIZATION

# UNIKOM STEEL

Your Satisfaction, Our Mission

## CONTACT US

[Info@unikomtr.com](mailto:Info@unikomtr.com)

---







**ACCOUNTABILITY**



**QUALITY**



**RELIABILITY**

## WHO WE ARE

We are a company dedicated to providing creative and efficient solutions in the transmission and distribution sector, utility, lighting and telecommunications field. In order to do this, we have equipped ourselves with state of the art hydraulic pressure folding machines and conveyor systems capable of flattening, cutting and folding metal with immense precision. This allows us to produce various lighting poles and utility poles that not only offers a great deal of customisability but also products of the utmost quality.

”

We have products shipped all over the world including Southeast Asia, Europe, Middle East, Central and South America.

“

## OUR PROMISE

### ACCOUNTABILITY

We have been in operation since 2001 and have since grown to a respectable 120 staffed company with an annual production output of 20,000 tonnes of metal products per year. In addition, our manufacturing process is ISO9001 certified.

### QUALITY

All products manufactured are gone through a thorough inspection and rigorous testing. Our customers believe in our products as we adhere to international standards to produce the best possible products to our customers' satisfaction.

### RELIABILITY

At Futao Metal, we value honesty and transparency in communicating with all our clients. Our experienced sales team will handle all enquiries swiftly and guide you through the buying and exporting process every step of the way. We aim to make this purchasing process as pain free as possible for all our clients.

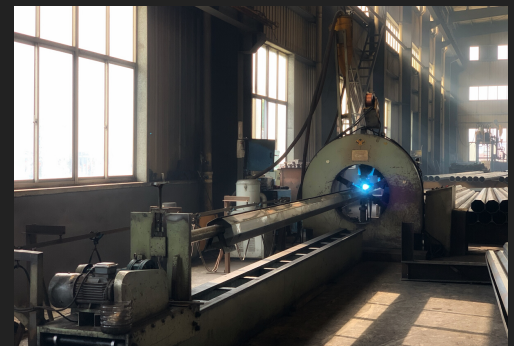


# OUR FACTORY





# BEHIND THE SCENES





# STREET LIGHTING POLES

OUR STREET LIGHTING POLES CAN BE CUSTOMIZED IN VARIOUS WAYS ACCORDING TO YOUR NEEDS. THIS INCLUDES POLE LENGTH, SPRAY PAINTED COLOUR, SHAPE OF THE POLE SHAFT, NUMBER AND STYLE OF CROSS ARMS.

## PRODUCT SPECIFICATIONS

- HEIGHT : 6 - 15M
- APPLICATION : AIRPORT, SEAPORT, PLAZA, HIGHWAY, STREET LIGHTING, ETC.
- IP RATING : IP 65
- ALL SURFACES ARE HOT DIP GALVANIZED ACCORDING TO INTERNATIONAL STANDARDS (ASTM A123)





# HIGH MAST LIGHTING POLES

HIGH MAST LIGHTING POLES ARE OFTEN USED IN LARGE AREAS WHERE TRADITIONAL LIGHTING METHODS WOULD BE EITHER INEFFICIENT OR COSTLY. THIS IS WHERE WE COME IN. FUTAO METAL'S HIGH MAST LIGHTING POLES COME IN A WIDE VARIETY OF CONFIGURATIONS AND FINISHES TO MEET YOUR NEEDS. IN ADDITION, OUR POLES CAN BE EQUIPPED WITH ADAPTABLE LOWERING DEVICES TO ALLOW FOR EASIER MAINTENANCE OF LAMPS.

## PRODUCT SPECIFICATIONS

- HEIGHT : 15 - 40M
- APPLICATION : AREAS THAT REQUIRE A LARGE AREA OF LIGHTING (AIRPORTS, SHIPPING TERMINALS, STADIUMS)
- LIGHTING SOURCE : HIGH PRESSURE SODIUM LAMPS/LED FLOODLIGHTS
- IP RATING : IP 65
- ALL SURFACES ARE HOT DIP GALVANIZED ACCORDING TO INTERNATIONAL STANDARDS (ASTM A123)



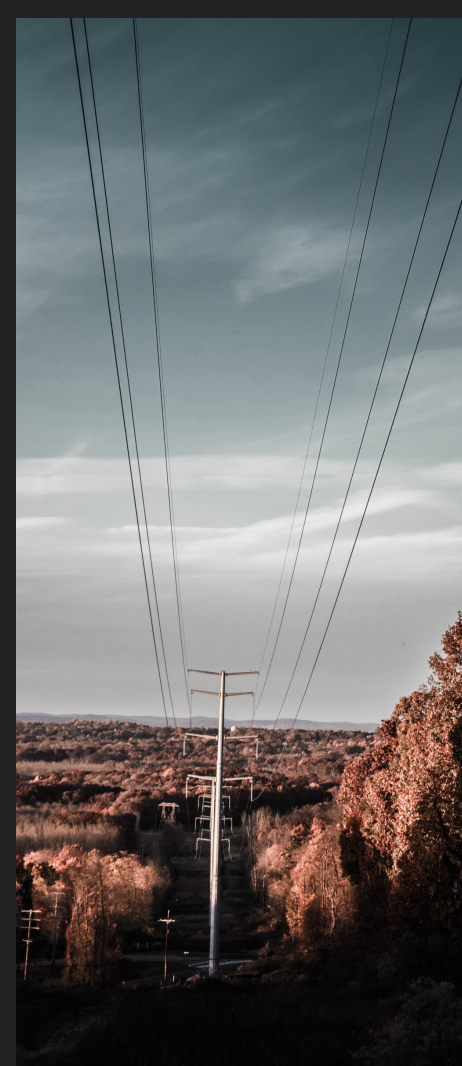


# TRANSMISSION MONOPOLES

WITH OVER 20 YEARS WORTH OF EXPERIENCE IN THE TRANSMISSION AND DISTRIBUTION SECTOR, YOU CAN BE SURE THAT OUR MONOPOLES ARE ONE OF THE BEST IN THE BUSINESS. OUR INTERMEDIATE, ANGLE AND TERMINAL/DEAD END POLES CAN BE DESIGNED TO SUIT ALL YOUR OVERHEAD TRANSMISSION LINE NEEDS NO MATTER THE TERRAIN, ENVIRONMENT AND SOIL CONDITIONS. TRANSMISSION MONOPOLES HAVE A UNIFORM TAPER AND SHALL CONSIST OF TWO OR MORE SECTIONS WITH TELESCOPIC JOINTS AS PER THE REQUIRED HEIGHT. FURTHERMORE, OUR TRANSMISSION MONOPOLES HAVE A MUCH SMALLER FOOTPRINT THAN TRADITIONAL LATTICE TYPE STEEL TOWERS MAKING IT EASIER FOR RIGHT OF WAY CLEARANCE AND HAS LESS OF AN IMPACT ON THE ENVIRONMENT. IN ADDITION, IT IS MUCH MORE CONVENIENT TO ERECT ON SITE AND REQUIRES LESS MAINTENANCE COST.

## PRODUCT SPECIFICATIONS

- HEIGHT : 2 - 50M
- CAN BE USED TO SUPPORT 10 - 500KV SINGLE/DOUBLE CIRCUIT TRANSMISSION LINES
- UNIFORM TAPERED DESIGN
- DESIGNED WITH PLS SOFTWARE IN LINE WITH ASCE 48-05/ASCE 48-11 STANDARDS
- SELF SUPPORTING DESIGN ALLOWS FOR EASIER ON SITE INSTALLATION
- LOWER MAINTENANCE COSTS
- ENVIRONMENTALLY SAFE AND FRIENDLY
- ALL SURFACES ARE HOT DIP GALVANIZED ACCORDING TO INTERNATIONAL STANDARDS (ASTM A123)





# SECURITY CAMERA POLES

IN THIS DAY AND AGE, SECURITY CANNOT BE UNDERSTATED. THIS IS WHY AT FUTAO METAL, WE ARE COMMITTED TO GIVING YOU ONLY THE BEST WE CAN OFFER. OUR SECURITY CAMERA POLES ARE NOT ONLY STURDY BUT ALSO PROVIDES SUPERIOR SURVEILLANCE QUALITY, GIVING YOU THE BEST OF THE BOTH WORLDS.

## PRODUCT SPECIFICATIONS

- HEIGHT : 1 - 16M
- APPLICATION : STREETS, HOUSING AREA
- POWER CONSUMPTION : 20 - 400W
- ASEISMIC DESIGN
- BUILT TO WITHSTAND MAXIMUM WIND VELOCITIES OF 160KM/H
- ALL SURFACES ARE HOT DIP GALVANIZED ACCORDING TO INTERNATIONAL STANDARDS (ASTM A123)





# TRAFFIC POLES

UNIKOM METAL OFFERS A WIDE VARIETY OF CUSTOMISABLE SOLUTIONS TO TRAFFIC CONTROL SYSTEMS. WHETHER IT'S TRAFFIC LIGHTS OR TRAFFIC SIGNAGE, WE'VE GOT WHAT YOU'RE LOOKING FOR. WE OFFER CYLINDRICAL AND POLYGONAL SHAPED POLES WITH VARIOUS CONNECTING ARM OPTIONS INCLUDING SINGLE ARM AND DOUBLE ARM OPTIONS. REST ASSURED THAT OUR TRAFFIC POLES ARE MADE WITH QUALITY IN MIND AND WILL LAST FOR YEARS TO COME.

## PRODUCT SPECIFICATIONS

- HEIGHT : 3 - 20M
- APPLICATION : TRAFFIC CONTROL
- POLE SHAPE : CYLINDRICAL/POLYGONAL
- ALL SURFACES ARE HOT DIP GALVANIZED ACCORDING TO INTERNATIONAL STANDARDS (ASTM A123)





# TELECOMMUNICATIONS POLE

OUR TELECOMMUNICATION POLES AT UNIKOM ARE DESIGNED TO BE USED IN VARIOUS FIELDS SUCH AS CELLULAR COMMUNICATIONS, BROADCASTING AND TELECOMMUNICATIONS. TELECOMMUNICATION POLES CAN EITHER BE BASE PLATE MOUNTED OR DIRECTLY BURIED. ALL BASEPLATES ARE MADE IN ACCORDANCE TO ASTM A633 GRE STANDARD FOR NORMALIZED HIGH STRENGTH LOW-ALLOY STRUCTURAL STEEL PLATES. IN ADDITION, THE SHAPE OF THE POLES CAN BE CONFIGURED IN A NUMBER OF OPTIONS INCLUDING ROUND AND MULTISIDED TAPERING. FOR THOSE LOOKING FOR A MORE AESTHETIC LOOK, WE HAVE DISGUISED TOWERS THAT WILL BLEND IN SEAMLESSLY IN ANY LOCATION.

---

## PRODUCT SPECIFICATIONS

- HEIGHT : 15 - 60M
- APPLICATION : TELECOMMUNICATIONS, BROADCASTING, CELLULAR
- DIRECT BURIAL MOUNTING/BASE PLATE WITH ANCHOR BOLTS MOUNTING AVAILABLE
- CUSTOM DESIGNS ARE AVAILABLE ACCORDING TO YOUR NEEDS
- ALL SURFACES ARE HOT DIP GALVANIZED AND MAY BE FURTHER SPRAY PAINTED IF NECESSARY ACCORDING TO CLIENT'S REQUIREMENTS







## Your Satisfaction, Our Mission

FOR THE PAST 20 YEARS UNIKOM STEEL HAS OPERATED UNDER ONE GOAL - TO PROVIDE THE BEST NOT ONLY IN QUALITY BUT ALSO IN COST EFFECTIVENESS. WE HAVE STOOD OUT FROM OUR COMPETITORS BECAUSE WE PROVIDE EXCELLENT VALUE TO OUR CUSTOMERS VIA OUR HIGH QUALITY PRODUCTS AND WE WILL CONTINUE TO STRIVE TO ACHIEVE EXCELLENCE IN ALL ASPECTS OF OUR PRODUCTION LINE. WE WILL ALWAYS BEAR OUR COMPANY MOTTO IN MIND AS WE ALWAYS HAVE FOR THE PAST 20 YEARS - YOUR SATISFACTION, OUR MISSION.

[Info@unikomtr.com](mailto:Info@unikomtr.com)